

**PLAN**  
Scale: 1" = 40'

**LA CIMA ST.**

**CONSTRUCTIONS NOTES-**

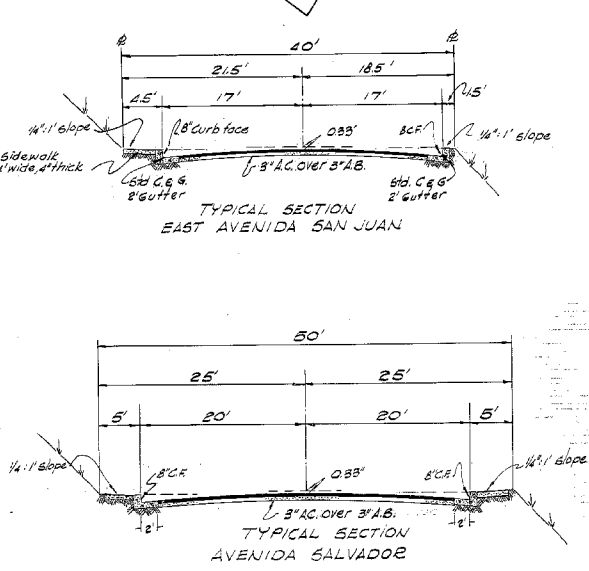
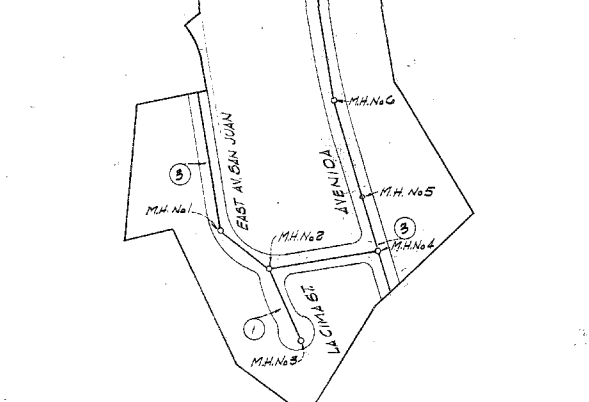
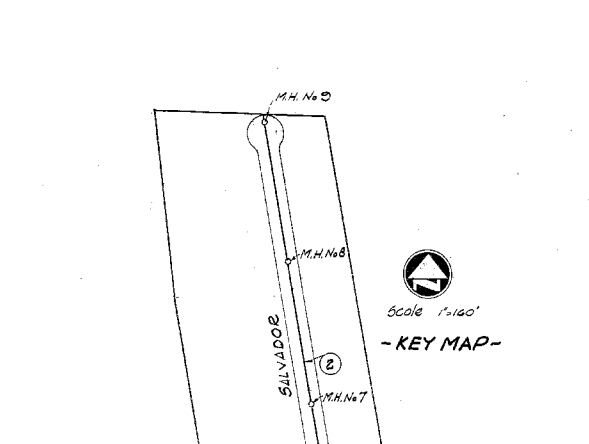
1. Const. 3" C. over 3" A.B.
2. Const. 8" C. over 3" A.B.
3. Const. 5" C. over 3" A.B.
4. Install Street Sign
5. Install Stop Sign
6. Tree planting easement and 300'

**PLAN AND PROFILE FOR STREET IMPROVEMENTS FOR**  
**TRACT No. 3981**  
**IN THE CITY OF SAN CLEMENTE, CALIFORNIA.**

**PREPARED BY:**  
**HUNTINGTON ENGINEERING CORP.**  
**7355 SLATER AVENUE**  
**HUNTINGTON BEACH, CALIF.**

**UNDER THE SUPERVISION OF:**  
*TERENCE L. BARRY*  
TERENCE L. BARRY E.C.E. 14010

**APPROVED BY:**  
*Eugene H. Ayer*  
CITY ENGINEER DATE: 1-2-64



**PLAN AND PROFILE FOR STREET IMPROVEMENTS FOR**  
**TRACT No. 3981**  
**IN THE CITY OF SAN CLEMENTE, CALIFORNIA.**

**~ GENERAL NOTES ~**

It shall be the responsibility of the Contractors to acquaint themselves with all obstructions such as curbs, conduits, wires, trees, pipe lines, etc. above or below the ground and will be held responsible for any damage to existing facilities resulting from his operations, regardless of whether or not such facilities are shown on these plans.

**SEWER SYSTEM**

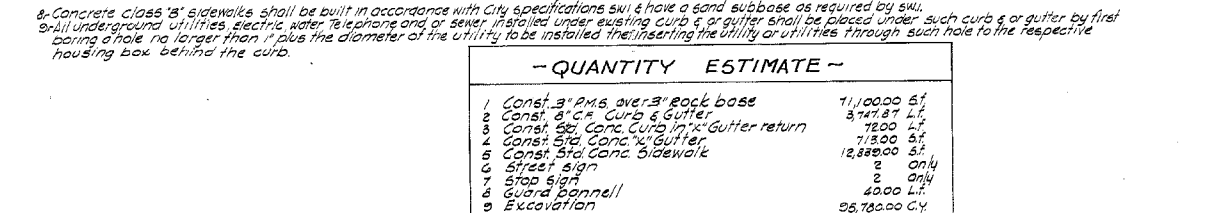
1. All sewers, manholes, house connections, backfills, pavement, replacement etc. shall be constructed in strict accordance with the standards and specifications of the City of San Clemente, and shall be subject to the approval of the City Engineer.
2. Sewer manhole frames and covers shall be adjusted by the sewer contractor to finish pavement grade, and shall be poured around each adjusted frame in accordance with City standards.
3. All sewer main pipe shall be 8" extra heavy clay pipe with compression type joints.
4. Manholes or drop manholes may be either brick or concrete, pre-cast, of the size and dimensions as specified by the City standards.
5. All sewer house connections shall be 4" vitrified clay pipe with compression joints. All house connections shall be connected to a knee of the same size on the main or chimney. All house connections shall extend to the property line and shall be at least 4" below the gutter grade of curb line.
6. All sewer trenches shall be compacted to 95% of max. density at optimum moisture with a mechanical tamping device, as may be required by the City Engineer.
7. Exact locations of sewer house connections will be determined by the Tract Engineer in the field and shall be referenced by the contractor prior to backfill. The contractor shall furnish the City the distance from lower M.H. to each sewer house connection and stamp with the letter 'S' in the curb of the location where the house connection crosses the curb.

**WATER SYSTEM**

1. The water system shall be constructed after concrete curbs & gutters are poured & shall be in strict accordance with the standards and specifications of the City of San Clemente, and shall be subject to approval by the City Engineer.
2. All water main pipe shall be asbestos cement pipe, class 150, with rubber ring compression joints, and shall have a minimum cover of 36 inches.
3. All fittings, valves, fire hydrants, etc. shall have hub ends adapted for rubber ring compression joints.
4. Valves and fire hydrants shall be low pressure, or approved equal. Fire hydrants shall have 2" hose connection with a 4" min. barrel diameter. All hydrants shall be painted orange as specified by the City. All hydrants shall have a 2" asbestos cement pipe lateral connection to the main with a 2" gate valve.
5. All gate valves shall be 12" or 14" angle meter stop for each lot installed on the connection at the proper location to receive a meter, and a 2" concrete meter box & cover shall be furnished and set over each meter stop adjoining the back of curb and set to meet finish curb or sidewalk grade flush. (Meter box 18"x18").
6. Class 'A' concrete thrust blocks shall be poured at each fire hydrant, at all tees, bends, valves, dead ends, & other fittings, of sufficient size to accommodate 20' pipe thrusts.
7. Exact locations of house connections will be determined by the Tract Engineer in the field.
8. All trenches shall be compacted to 95% of max. density at optimum moisture with a mechanical tamping device as may be required by the City Engineer.
9. The entire water system shall be disinfected by the contractor, as may be required by the City Engineer.
10. Upon completion, the entire system shall be tested by the contractor at 150 lbs/sq. in. pressure for 24 hours, & shall meet the satisfaction of the City Engineer.
11. All water house connections of the size shown on the plans shall be type 'K' soft copper tubing & shall extend from a 'tapped' asbestos cement coupling on the main, all connections serving 2 lots shall be 1/2" in diameter. All connections serving only 1 lot shall be 1/4" in diameter. All connections shall have a 'corporation' cock and shall be installed in strict accordance with the standards and specifications of the City of San Clemente (see std. detail). The pipes shall be at least 4 inches below gutter grade of curb line and shall be brought up behind curb at the proper location to accommodate meters. The meter stop for each lot installed on the connection at the proper location to receive a meter, and a 2" concrete meter box & cover shall be furnished and set over each meter stop adjoining the back of curb and set to meet finish curb or sidewalk grade flush. (Meter box 18"x18").
12. All asbestos cement pipe shall be steam cured in conformance to ASTM std. spec. C-206-62 and shall be tested in the State of California. Evidence of steam curing & testing shall be furnished to City Engineer upon his request from contractor.

**CONCRETE AND PAVING**

1. All street improvements shall be constructed in strict accordance with the std. details & specifications of the City of San Clemente.
2. All concrete used shall be class 'A' concrete (5 sacks cement per cu yd.).
3. All cross gutters shall be 4" wide & curb gutters shall be 24" wide.
4. Aggregate base shall be class 1 having a 1 1/2" maximum grading or decomposed granite having a 3/4" grading and acceptable to the City Engineer.
5. Asphaltic concrete plant mix pavement (Type 'A') shall have a medium grading specified for 3/4" max. aggregate. The 3/4" shall have paving grade with 85-100 penetration. Plant mix 1 1/2" shall be laid in two 3/4" courses. First course may be placed & rolled, second course shall be machine laid.
6. The seal coat shall be 50-70 Hot asphaltic emulsion applied at the rate of 0.15 gal/sq. ft.
7. Concrete class 'B' sidewalks shall be built in accordance with City specifications and have a sand subbase as required by std.
8. All underground utilities, electric, water, telephone and/or sewer installed under existing curb & gutter shall be placed under such curb & gutter by first boring a hole no larger than 1" plus the diameter of the utility to be installed then inserting the utility or utilities through such hole to the respective housing box behind the curb.



**QUANTITY ESTIMATE**

Item	Quantity	Unit	Price
1. Const. 3" C. over 3" A.B.	11,000.00	SF	3.71
2. Const. 8" C. over 3" A.B.	1,730.00	LF	1.25
3. Const. 5" C. over 3" A.B.	1,730.00	LF	1.25
4. Const. 8" C. over 3" A.B.	1,730.00	LF	1.25
5. Const. 5" C. over 3" A.B.	1,730.00	LF	1.25
6. Street Sign	2	Only	
7. Stop Sign	2	Only	
8. Guard Bollard	40.00	LF	
9. Excavation	25,730.00	CY	
<b>- Sewer -</b>			
1. Const. 8" C.P. sewer	1,973.00	LF	
2. Const. Std. Manholes	2	Only	
3. Const. 2" C.P. sewer	1,250.00	LF	
<b>- Water -</b>			
1. 8" A.C. water main	6,880.00	LF	
2. 6" A.C. water main	1,877.00	LF	
3. Fire hydrants	50	Only	
4. Tees	5	Only	
5. 6" G.I.	1	Only	
6. 6" G.I.	1	Only	
7. Flange (blind)	1	Only	
8. Double water services	24	Only	
9. Storm Drain	205	LF	
10. Catch basins	2	Only	
11. 24" E.C.P. 1750 D	2	Only	
12. Std. Catch Basins	2	Only	

**PRIVATE ENGINEER'S NOTICE TO CONTRACTORS**

The existence and location of any underground utility pipe or structure shown on these plans were obtained by a search of the available records. To the best of our knowledge, there are no existing utilities except as shown on these plans. The Contractor is required to take precautionary measures to protect the utility lines shown and any lines not of record or not shown on these plans.

**TRACT 3981**  
**Sheet 1 of 3**

TRACT 3981  
Sheet 2 of 3

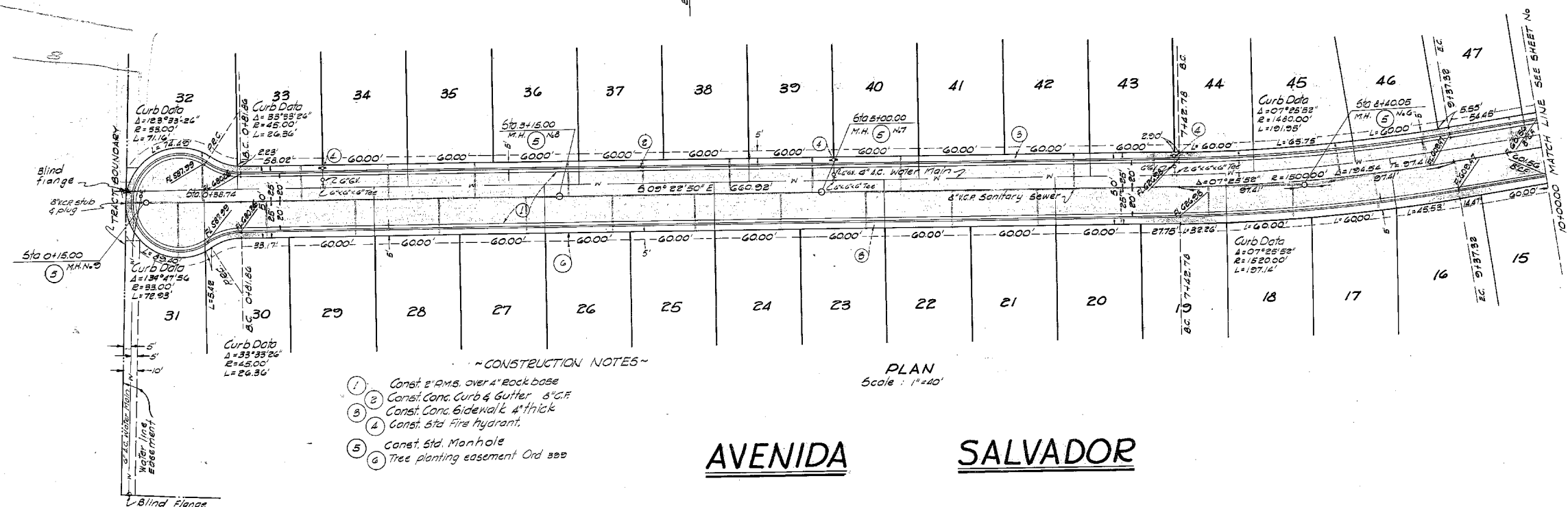


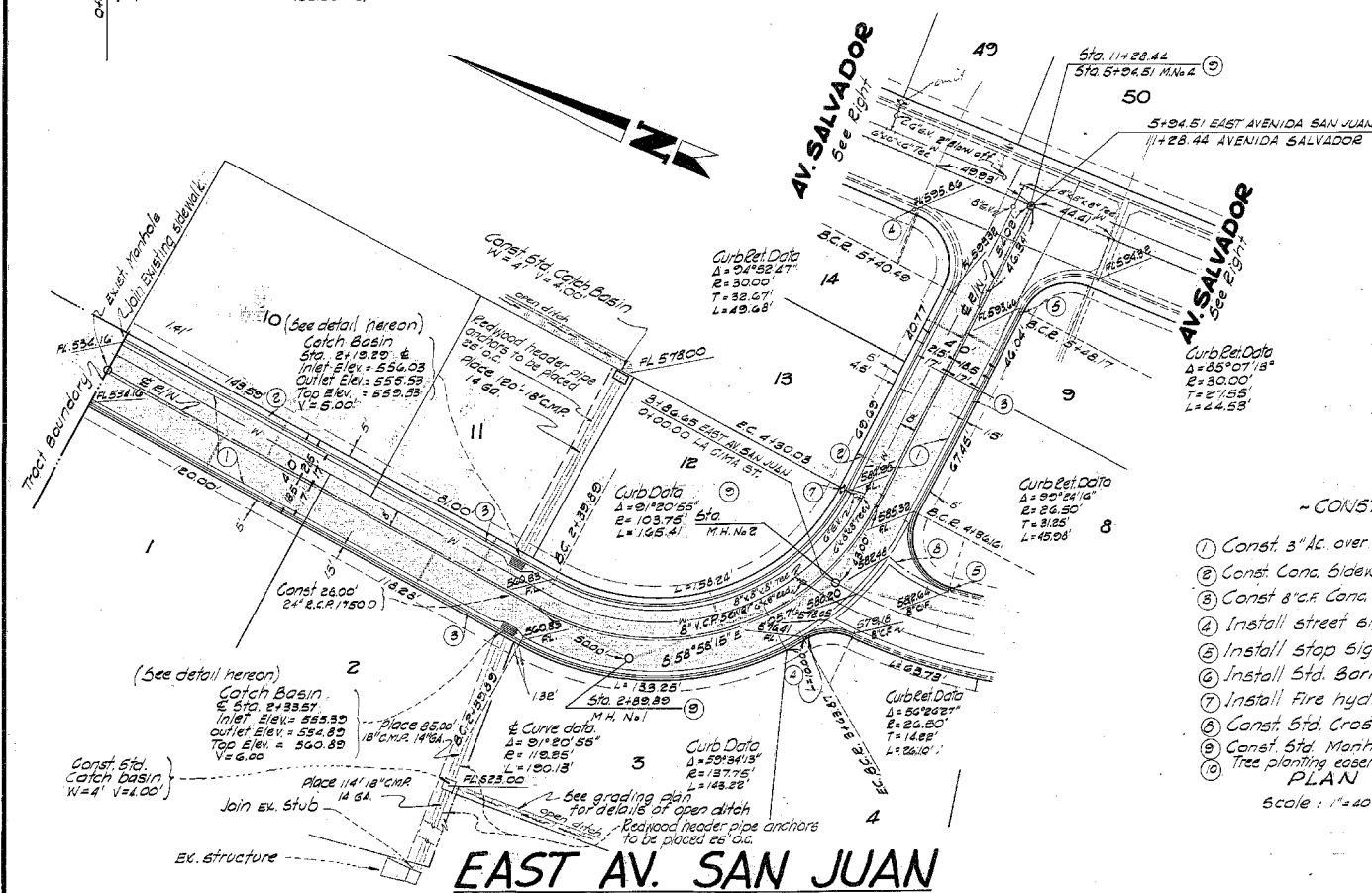
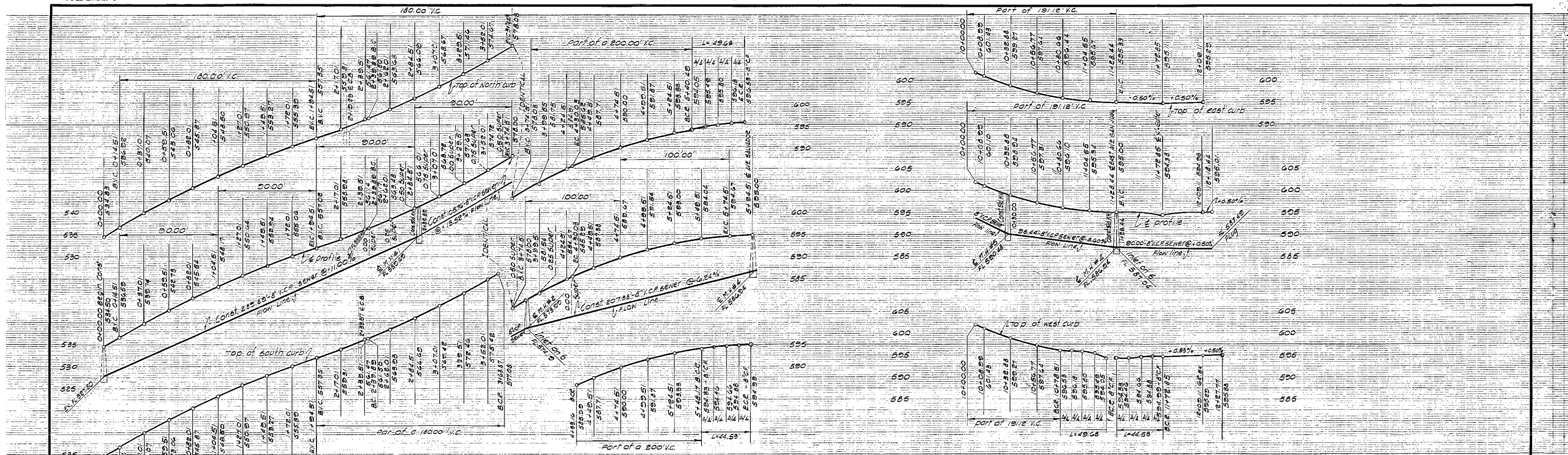
PLAN  
Scale: 1"=40'

- ~ CONSTRUCTION NOTES ~
1. Const. 2" P.M.S. over 4" Rock base
  2. Const. Conc. Curb & Gutter 8" G.F.
  3. Const. Conc. Sidewalk 4" thick
  4. Const. Std. Fire Hydrant
  5. Const. Std. Manhole
  6. Tree planting easement Ord 399

AVENIDA

SALVADOR



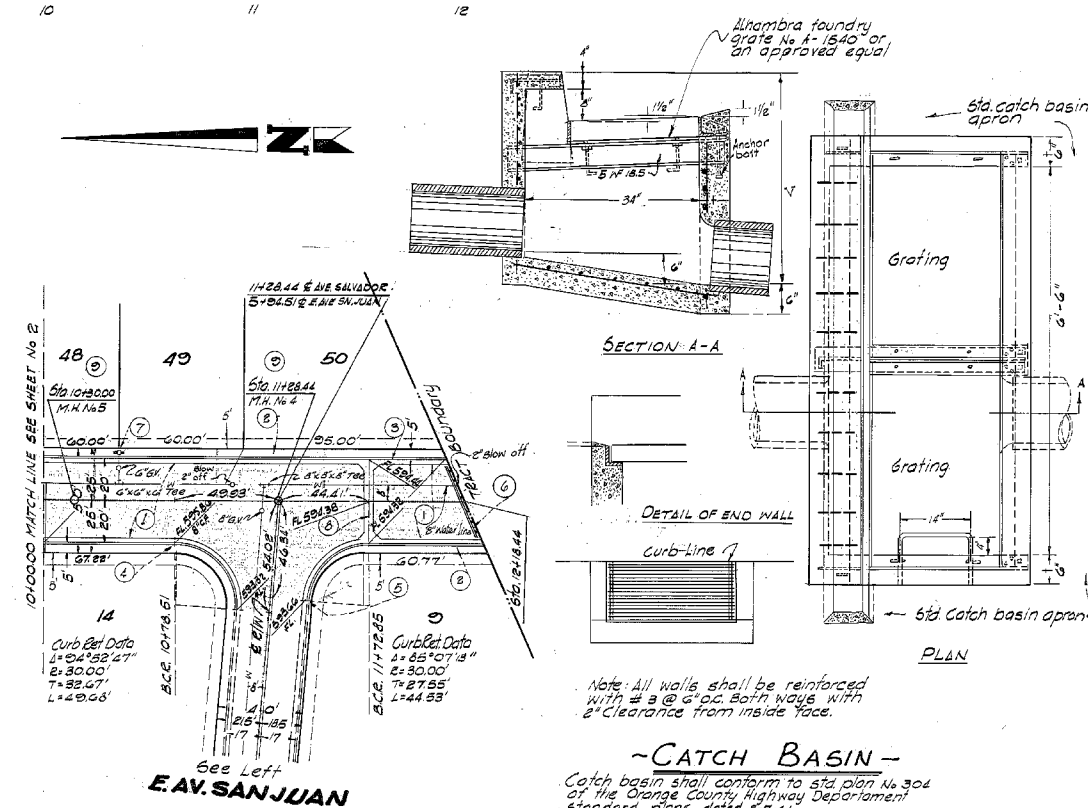


#### CONSTRUCTION NOTES

1. Const. 3" Ac. over 3" A.C.
2. Const. Conc. Sidewalk 4" thick w/ 1" sand base
3. Const. 8" A.C. Conc. Curb & Gutter
4. Install street sign
5. Install stop sign
6. Install Std. Barricade
7. Install Fire hydrant
8. Const. Std. Cross-Gutter Ref City Standards
9. Const. Std. Manhole Ref City Standards
10. Tree planting easement Ord 300

PLAN

Scale: 1" = 40'



Note: All walls shall be reinforced with #4 @ 6" o.c. both ways with 2" clearance from inside face.

#### CATCH BASIN

Catch basin shall conform to std. plan No. 304 of the Orange County Highway Department standard plans dated 8-7-61.

AVENIDA SALVADOR

TRACT 3981  
Sheet 3 of 3